

LANDS AND SURVEYS DEPARTMENT

ST. VINCENT W.I.

Field Book No.

Survey Order No. P123/09

Correspondence No.

St. George

Stral Block No.

Block or Locality RATHO MILL

Grid Coordinates of sta. 12

E = 705 04 m

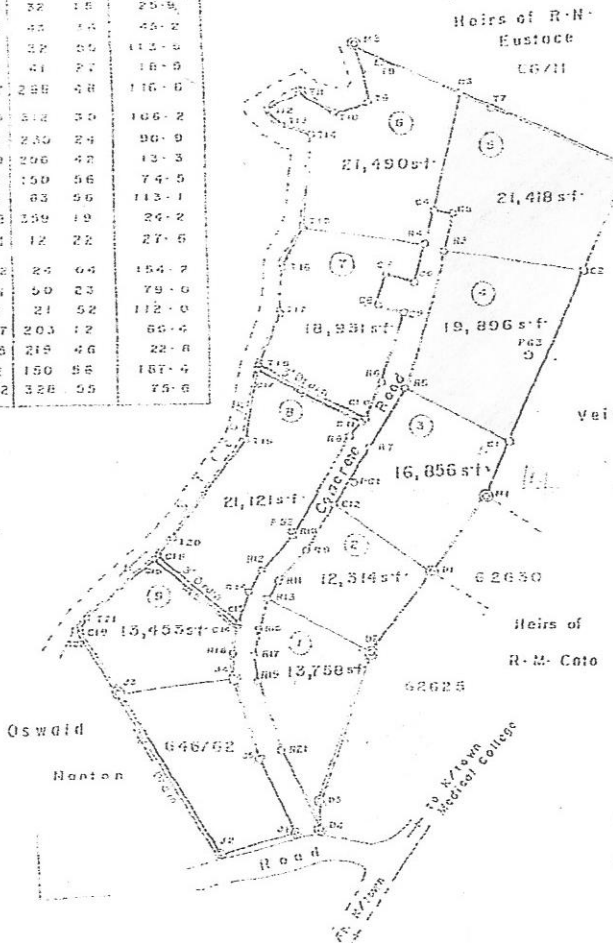
N = 444 32 m

LINE	BEARING	DISTANCE
110-111	191° 40'	72.7
111-112	019 33	192.07
112-113	220 03	19.9
113-114	131 52	104.5
114-115	10 47	32.7
115-116	32 15	25.9
116-117	43 14	45.2
117-118	37 00	113.5
118-119	41 27	18.9
119-120	288 48	116.6
120-121	312 30	106.2
121-122	230 24	90.9
122-123	296 42	13.3
123-124	150 56	74.5
124-125	63 56	113.1
125-126	139 19	24.2
126-127	12 22	27.6
127-128	29 04	154.7
128-129	50 23	79.6
129-130	21 52	112.0
130-131	20.3 12	80.4
131-132	215 46	22.8
132-133	150 58	187.4
133-134	326 55	75.8

TRAVERSE			TRAVERSE			
LINE	BEARING	DISTANCE	LOT	LINE	BEARING	DISTANCE
P61-P63	55° 11'	212.7	1	P2-P3	201° 07'	167.0
P18-P17	97 33	110.6		P3-P4	165 37	28.8
P4-P5	165 21	82.6		P4-P21	336 13	88.7
P7-P22	116 00	145.8		P21-P19	343 29	71.3
P7-P8	294 36	116.0		P19-P17	364 23	20.7
				P17-P15	01 45	28.7
				P15-P13	17 11	23.1
				P13-P2	149 53	116.5
				P2-P22	218 38	90.3
				P13-P11	34 41	20.2
				P11-P9	34 01	42.7
				P9-P22	33 59	52.3
				P12-P1	127 01	116.0
				P1-P2	35 53	32.4
				P2-P3	24 54	37.8
				P3-P5	370 01	14.9
				P5-P7	212 02	70.1
				P7-P22	213 38	34.7
				P1-C2	24 58	184.6
				P2-P3	250 18	133.7
				P3-P5	198 05	140.0
				P2-P22	29 43	112.8
				P2-P3	296 41	177.8
				P3-P4	185 44	118.4
				P4-P5	165 03	20.1
				P5-P3	129 37	27.8
				P2-P3	204 11	51.4
				P3-P5	143 08	59.0
				P3-P10	204 10	37.1
				P10-P11	302 19	37.7
				P11-P12	342 01	27.3
				P12-P13	173 56	17.5
				P13-P14	108 04	30.3
				P14-P15	180 44	33.8
				P15-P4	55 35	120.2
				P4-P22	15 44	34.5
				P2-P3	10 04	128.4
				P14-P15	211 04	38.8
				P14-P17	188 00	45.3
				P17-P18	253 12	57.3
				P18-P19	1.8 77	117.2
				P19-P5	24 42	41.7
				P22-P3	18 07	70.2
				P3-P22	289 18	144.5
				P2-P7	0 51	30.3
				P7-P3	106 28	20.5
				P3-P4	17 25	35.0

LEGEND

- ⊙ Man. pit
- ⊙ Man. fd.
- ⊙ Iron pit
- ⊙ Peg



SCALE - 1:1250
Distances are in feet/metres

Note - To obtain true bearing add
PLAN of a parcel of Land bordered
five poles.

pink containing altogether three acres, two roads and twenty-

Surveyed by me with due authority in February, 2009 at the instance of Mrs. Lucy-Ann Coto.

Arthur Robertson
Authenticated Land Surveyor
MR ARTHUR ROBERTSON

Approved and Lodged on the 19th February 2009

Chief Surveyor
Chief Surveyor

Drawn by *AR Robertson*
Checked by *AR Robertson*
Entered on *SL 51*

Drawing No. *62707*